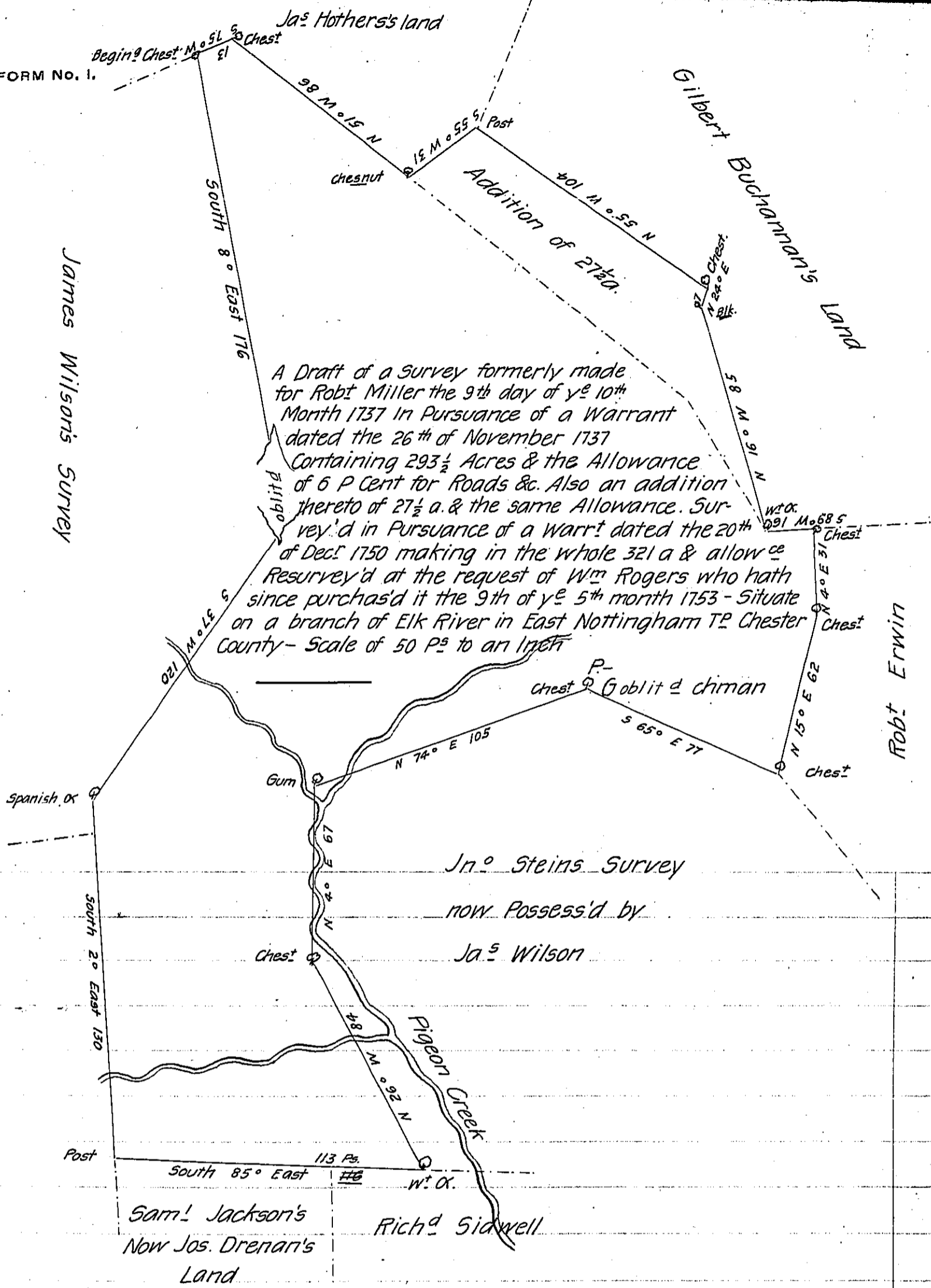


FORM NO. 1.

James Wilson's Survey

A Draft of a Survey formerly made for Robt Miller the 9th day of y^e 10th Month 1737 in Pursuance of a Warrant dated the 26th of November 1737 Containing 293 1/2 Acres & the Allowance of 6 P Cent for Roads &c. Also an addition thereto of 27 1/2 a. & the same Allowance. Survey'd in Pursuance of a Warr^t dated the 20th of Dec^r 1750 making in the whole 321 a & allow^{ce} Resurvey'd at the request of W^m Rogers who hath since purchas'd it the 9th of y^e 5th month 1753 - Situate on a branch of Elk River in East Nottingham T^p Chester County - Scale of 50 P^s to an Inch



Note On Examination I find the whole Tract to Contain 323 a & allow^{ce} Also in Order to Close the Work for Calculation I was under the necessity of deducting 3 P^s from the dist of the 4th Station & call it 113 P^s

E. Lynch

IN TESTIMONY that the above is a copy of the original remaining on file in the Department of Internal Affairs of Pennsylvania, made conformably to an Act of Assembly approved the 16th day of February, 1833, I have hereunto set my Hand and caused the Seal of said Department to be affixed at Harrisburg, this first day of May 1906

Joseph P. Hoover
Secretary of Internal Affairs.